

DATASHEET

Cytokeratin CAM5.2 Mouse Monoclonal Antibody (ARM613)

CAT. NO. ARM6904

KEY FEATURES

Target	Cytokeratin CAM5.2	Clone ID	ARM613
Source / Host	Mouse	Reactivity	Human
Applications	IHC	Dilution	1:50-1:200
Clonality	Monoclonal	Storage	-20°C

BACKGROUND

Cytokeratin CAM5.2 is a low molecular weight keratin that reacts with Moll's peptides #7 and #8 (keratins 7 and 8). It's used in pathology as a monoclonal antibody for immunohistochemistry to identify normal and malignant cells of epithelial origin, particularly glandular (secretory) epithelia, and cancers like colorectal cancer, pancreatic cancer, liver cancer, and some breast cancers. However, it's not reactive with squamous epithelium and may have limited staining in some squamous cell carcinomas.

APPLICATION

To ensure optimal assay performance, AREX recommends conducting reagent titration tailored to each testing system for optimal detection results.

Application	IHC
Dilution Ratio	1:50-1:200

*Results are sample-specific. Please refer to your local assay conditions and test parameters for reference.

PRODUCT OVERVIEW

Antibody Type	Primary antibodies
Isotype	IgG2a / Kappa
Positive Control	Colon Cancer
Localization	Cytoplasmic
Form / Buffer	Tris Buffer, pH 7.3 - 7.7, with 1% BSA and <0.1% Sodium Azide
Purification	Purified
Conjugation	Unconjugated
Gene Symbol	KRT8
Entrez Gene ID	3856
Uniprot	P05787
Alternative Names	Primarily identifies Cytokeratin 8

*AREX continuously optimizes our products. Webpage content may not reflect the latest updates. For inquiries, please contact info@arexbio.com or your local distributor.

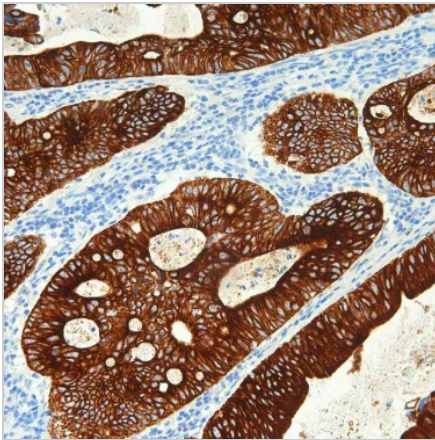
*Clone Number, Reactivity, Source/Host and Clonality can be found in the product name and Key Features section above.

DATASHEET**Cytokeratin CAM5.2 Mouse Monoclonal Antibody (ARM613)**

CAT. NO. ARM6904

STORAGE

Store at 4°C short term. For long term storage, store at -20°C, avoiding freeze/thaw cycles.

DATA

Immunohistochemical staining of human colon tissue sections using Cytokeratin CAM5.2 Mouse Monoclonal Antibody (ARM613). Immunohistochemical staining of human cervical tissue sections using Cytokeratin CAM5.2 Mouse Monoclonal Antibody (ARM613).

RESEARCH USE ONLY

For Research Use Only. Not for diagnostic, therapeutics, prophylactic or in vivo use.

More information: [www.arexbio.com / cytokeratin-cam5.2-mouse-monoclonal-antibody-arm613-arm6904](http://www.arexbio.com/cytokeratin-cam5.2-mouse-monoclonal-antibody-arm613-arm6904)