

DATASHEET

FGFR2b Mouse Monoclonal Antibody (ARM616)

CAT. NO. ARM6907

KEY FEATURES

Target	FGFR2b	Clone ID	ARM616
Source / Host	Mouse	Reactivity	Human
Applications	IHC	Dilution	1:50-1:200
Clonality	Monoclonal	Storage	-20°C

BACKGROUND

FGFR2b is a receptor protein that is an emerging biomarker, particularly in advanced gastric and gastroesophageal junction (G/GEJ) cancers. It is overexpressed in about one-third of patients with these cancers and is targeted by certain therapies.

APPLICATION

To ensure optimal assay performance, AREX recommends conducting reagent titration tailored to each testing system for optimal detection results.

Application	IHC
Dilution Ratio	1:50-1:200

*Results are sample-specific. Please refer to your local assay conditions and test parameters for reference.

PRODUCT OVERVIEW

Antibody Type	Primary antibodies
Isotype	
Positive Control	
Localization	
Form / Buffer	Tris Buffer, pH 7.3 - 7.7, with 1% BSA and <0.1% Sodium Azide
Purification	Purified
Conjugation	Unconjugated
Gene Symbol	FGFR2
Entrez Gene ID	2263
Uniprot	P21802
Alternative Names	Fibroblast growth factor receptor 2 (IIIb isoform)

*AREX continuously optimizes our products. Webpage content may not reflect the latest updates. For inquiries, please contact info@arexbio.com or your local distributor.

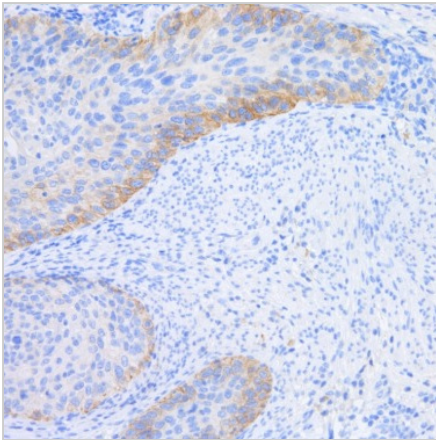
*Clone Number, Reactivity, Source/Host and Clonality can be found in the product name and Key Features section above.

DATASHEET**FGFR2b Mouse Monoclonal Antibody (ARM616)**

CAT. NO. ARM6907

STORAGE

Store at 4°C short term. For long term storage, store at -20°C, avoiding freeze/thaw cycles.

DATA

Immunohistochemical staining of human cervical carcinoma tissue sections using FGFR2b Mouse Monoclonal Antibody (ARM616).

RESEARCH USE ONLY

For Research Use Only. Not for diagnostic, therapeutics, prophylactic or in vivo use.

More information: [www.arexbio.com / fgfr2b-mouse-monoclonal-antibody-arm616-arm6907](http://www.arexbio.com/fgfr2b-mouse-monoclonal-antibody-arm616-arm6907)