

DATASHEET

Flt-1/VEGFR1 Rabbit Monoclonal Antibody (ARM618)

CAT. NO. ARM6909

KEY FEATURES

| | | | |
|---------------|--------------|------------|------------|
| Target | Flt-1/VEGFR1 | Clone ID | ARM618 |
| Source / Host | Rabbit | Reactivity | Human |
| Applications | IHC | Dilution | 1:50-1:200 |
| Clonality | Monoclonal | Storage | -20°C |

BACKGROUND

Flt-1, also known as Fms Related Tyrosine Kinase 1 or VEGFR1 (Vascular Endothelial Growth Factor Receptor 1), is a tyrosine kinase involved in lymphangiogenesis, angiogenesis, and wound healing. It is present in endothelial cells, osteoblasts, placental trophoblasts, renal mesangial cells, and some hematopoietic stem cells. Anti-Flt-1/VEGFR1 is useful for identifying carcinomas of the larynx and esophagus.

APPLICATION

To ensure optimal assay performance, AREX recommends conducting reagent titration tailored to each testing system for optimal detection results.

| | |
|----------------|------------|
| Application | IHC |
| Dilution Ratio | 1:50-1:200 |

*Results are sample-specific. Please refer to your local assay conditions and test parameters for reference.

PRODUCT OVERVIEW

| | |
|-------------------|---|
| Antibody Type | Primary antibodies |
| Isotype | IgG |
| Positive Control | Angiosarcoma, Placenta |
| Localization | Cytoplasmic |
| Form / Buffer | Tris Buffer, pH 7.3 - 7.7, with 1% BSA and <0.1% Sodium Azide |
| Purification | Purified |
| Conjugation | Unconjugated |
| Gene Symbol | FLT1 |
| Entrez Gene ID | 2321 |
| Uniprot | P17948 |
| Alternative Names | Vascular endothelial growth factor receptor 1 |

*AREX continuously optimizes our products. Webpage content may not reflect the latest updates. For inquiries, please contact info@arexbio.com or your local distributor.

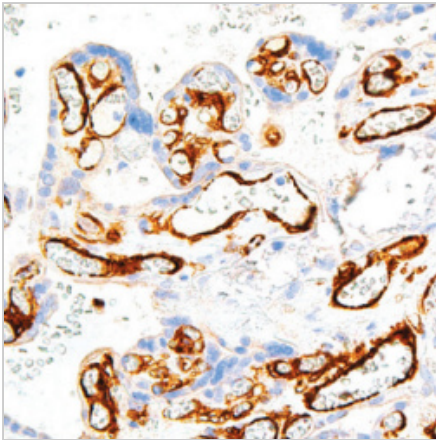
*Clone Number, Reactivity, Source/Host and Clonality can be found in the product name and Key Features section above.

DATASHEET**Flt-1/VEGFR1 Rabbit Monoclonal Antibody (ARM618)**

CAT. NO. ARM6909

STORAGE

Store at 4°C short term. For long term storage, store at -20°C, avoiding freeze/thaw cycles.

DATA

Immunohistochemical staining of human placenta tissue using Flt-1/VEGFR1 Rabbit Monoclonal Antibody (ARM618).

RESEARCH USE ONLY

For Research Use Only. Not for diagnostic, therapeutics, prophylactic or in vivo use.

More information: [www.arexbio.com /flt-1-vegfr1-mouse-monoclonal-antibody-arm618-arm6909](http://www.arexbio.com/flt-1-vegfr1-mouse-monoclonal-antibody-arm618-arm6909)