

DATASHEET

Glutamine Synthetase Mouse Monoclonal Antibody (ARM619)

CAT. NO. ARM6910

KEY FEATURES

Target	Glutamine Synthetase	Clone ID	ARM619
Source / Host	Mouse	Reactivity	Human
Applications	IHC	Dilution	1:50-1:200
Clonality	Monoclonal	Storage	-20°C

BACKGROUND

Glutamine Synthetase (GS-6 or GS) catalyzes the conversion of glutamate and ammonia to glutamine in the liver, and is expressed in pericentral hepatocytes, but not in periportal hepatocytes or in the mid-zonal hepatocytes. Anti-Glutamine Synthetase is useful in some hepatocellular carcinomas and many high grade dysplastic nodules, and therefore may be useful in recognizing these cases. A panel of antibodies against HSP70 (heat shock protein 70), GPC3, and glutamine synthetase is useful for differentiating dysplastic from early malignant hepatocellular nodules in cirrhosis. GS staining of hepatocellular lesions is useful for the differential diagnosis of focal nodular hyperplasia (FNH), hepatic adenoma (HCA), dysplastic nodules, and low grade hepatocellular carcinoma. FNH produces a “map-like” pattern when stained with Anti-Glutamine Synthetase. Conversely, HCA can stain negatively, produce border staining, or stain around the tumour veins.

APPLICATION

To ensure optimal assay performance, AREX recommends conducting reagent titration tailored to each testing system for optimal detection results.

Application	IHC
Dilution Ratio	1:50-1:200

*Results are sample-specific. Please refer to your local assay conditions and test parameters for reference.

PRODUCT OVERVIEW

Antibody Type	Primary antibodies
Isotype	IgG2a
Positive Control	Liver tissues
Localization	Cytoplasmic
Form / Buffer	Tris Buffer, pH 7.3 - 7.7, with 1% BSA and <0.1% Sodium Azide
Purification	Purified
Conjugation	Unconjugated
Gene Symbol	GLUL
Entrez Gene ID	2752
Uniprot	P15104
Alternative Names	GLNS; Glutamine synthetase; GS; Glutamate decarboxylase; Glutamate--ammonia ligase

*AREX continuously optimizes our products. Webpage content may not reflect the latest updates. For inquiries, please contact info@arexbio.com or your local distributor.

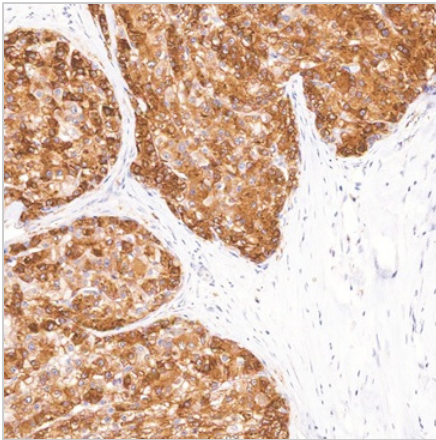
*Clone Number, Reactivity, Source/Host and Clonality can be found in the product name and Key Features section above.

DATASHEET**Glutamine Synthetase Mouse Monoclonal Antibody (ARM619)**

CAT. NO. ARM6910

STORAGE

Store at 4°C short term. For long term storage, store at -20°C, avoiding freeze/thaw cycles.

DATA

Immunohistochemical staining of human liver cancer tissue using Glutamine Synthetase Mouse Monoclonal Antibody (ARM619).

RESEARCH USE ONLY

For Research Use Only. Not for diagnostic, therapeutics, prophylactic or in vivo use.

More information: [www.arexbio.com / glutamine-synthetase-mouse-monoclonal-antibody-arm619-arm6910](http://www.arexbio.com/glutamine-synthetase-mouse-monoclonal-antibody-arm619-arm6910)