

DATASHEET

Heat Shock Protein 70 Mouse Monoclonal Antibody (ARM621)

CAT. NO. ARM6912

KEY FEATURES

Target	Heat Shock Protein 70	Clone ID	ARM621
Source / Host	Mouse	Reactivity	Human
Applications	IHC	Dilution	1:50-1:100
Clonality	Monoclonal	Storage	-20°C

BACKGROUND

Heat shock proteins 70 is important in protecting cells from stress. Its expression is elevated in tumor cell proliferation, differentiation, invasion and metastasis, and inhibits apoptosis. IHC testing of HSP70 aids in prognostic evaluation in various cancer types.

APPLICATION

To ensure optimal assay performance, AREX recommends conducting reagent titration tailored to each testing system for optimal detection results.

Application	IHC
Dilution Ratio	1:50-1:100

*Results are sample-specific. Please refer to your local assay conditions and test parameters for reference.

PRODUCT OVERVIEW

Antibody Type	Primary antibodies
Isotype	IgG2a
Positive Control	Breast Carcinoma, Lung Squamous Cell Carcinoma
Localization	Nuclear, Cytoplasmic
Form / Buffer	Tris Buffer, pH 7.3 - 7.7, with 1% BSA and <0.1% Sodium Azide
Purification	Purified
Conjugation	Unconjugated
Gene Symbol	HSPA1A
Entrez Gene ID	3303
Uniprot	PODMV8
Alternative Names	HSP70, HSPA1A

*AREX continuously optimizes our products. Webpage content may not reflect the latest updates. For inquiries, please contact info@arexbio.com or your local distributor.

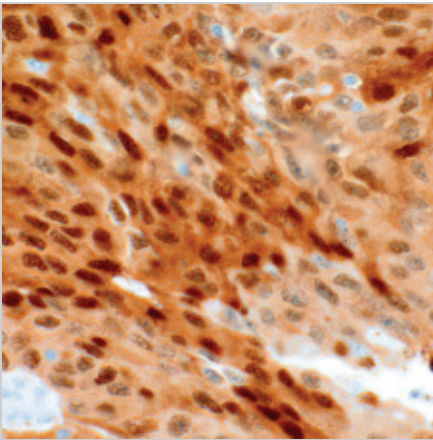
*Clone Number, Reactivity, Source/Host and Clonality can be found in the product name and Key Features section above.

DATASHEET**Heat Shock Protein 70 Mouse Monoclonal Antibody (ARM621)**

CAT. NO. ARM6912

STORAGE

Store at 4°C short term. For long term storage, store at -20°C, avoiding freeze/thaw cycles.

DATA

Immunohistochemical staining of human lung squamous cell carcinoma tissue using Heat Shock Protein 70 Mouse Monoclonal Antibody (ARM621).

RESEARCH USE ONLY

For Research Use Only. Not for diagnostic, therapeutics, prophylactic or in vivo use.

More information: www.arexbio.com/heat-shock-protein-70-mouse-monoclonal-antibody-arm621-arm6912