

## DATASHEET

# Hepatocyte Specific Antigen Mouse Monoclonal Antibody (ARM622)

CAT. NO. ARM6913

### KEY FEATURES

Target	Hepatocyte Specific Antigen	Clone ID	ARM622
Source / Host	Mouse	Reactivity	Human
Applications	IHC	Dilution	1:50-1:200
Clonality	Monoclonal	Storage	-20°C

### BACKGROUND

Hepatocyte Specific Antigen, also known as Hep-Par1, has proven to be strongly useful in the detection of both benign and malignant liver-derived tissues, and associated tumours such as hepatoblastoma and hepatocellular carcinoma (HCC). The pathological diagnosis of HCC is often difficult as it shares histological and cytological features with adenoid cystic carcinoma, renal cell carcinoma, adenocarcinoma, and cholangiocarcinoma. Hep-Par1 is indicated as an effective marker to distinguish between these mimics, and therefore aids in the differential diagnosis of HCC.

### APPLICATION

To ensure optimal assay performance, AREX recommends conducting reagent titration tailored to each testing system for optimal detection results.

Application	IHC
Dilution Ratio	1:50-1:200

\*Results are sample-specific. Please refer to your local assay conditions and test parameters for reference.

### PRODUCT OVERVIEW

Antibody Type	Primary antibodies
Isotype	IgG1
Positive Control	Liver tissues
Localization	Cytoplasmic
Form / Buffer	Tris Buffer, pH 7.3 - 7.7, with 1% BSA and <0.1% Sodium Azide
Purification	Purified
Conjugation	Unconjugated
Gene Symbol	CPS1
Entrez Gene ID	1373
Uniprot	P31327
Alternative Names	HepPar1, Carbamoyl-phosphate synthase 1

\*AREX continuously optimizes our products. Webpage content may not reflect the latest updates. For inquiries, please contact [info@arexbio.com](mailto:info@arexbio.com) or your local distributor.

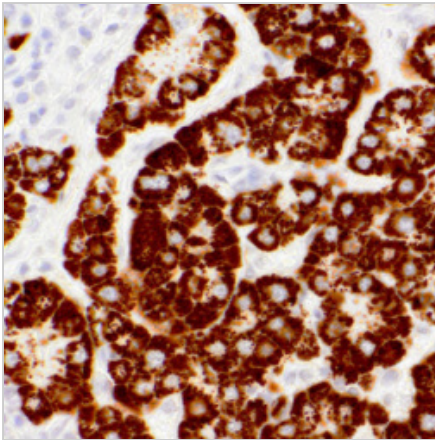
\*Clone Number, Reactivity, Source/Host and Clonality can be found in the product name and Key Features section above.

**DATASHEET****Hepatocyte Specific Antigen Mouse Monoclonal Antibody (ARM622)**

CAT. NO. ARM6913

**STORAGE**

Store at 4°C short term. For long term storage, store at -20°C, avoiding freeze/thaw cycles.

**DATA**

Immunohistochemical staining of human liver tissue using Hepatocyte Specific Antigen Mouse Monoclonal Antibody (ARM622).

**RESEARCH USE ONLY**

For Research Use Only. Not for diagnostic, therapeutics, prophylactic or in vivo use.

More information: [www.arexbio.com / hepatocyte-specific-antigen-mouse-monoclonal-antibody-arm622-arm6913](http://www.arexbio.com/hepatocyte-specific-antigen-mouse-monoclonal-antibody-arm622-arm6913)