

DATASHEET

Her3 Mouse Monoclonal Antibody (ARM623)

CAT. NO. ARM6914

KEY FEATURES

Target	Her3	Clone ID	ARM623
Source / Host	Mouse	Reactivity	Human
Applications	IHC	Dilution	1:50-1:200
Clonality	Monoclonal	Storage	-20°C

BACKGROUND

Receptor tyrosine-protein kinase erbB-3, also known as HER-3 (Human Epidermal Growth Factor Receptor 3), is a membrane bound protein and has been shown to bind the ligands heregulin and NRG-2. During human development, HER-3 antibody is expressed in skin, bone, muscle, nervous system, heart, lungs, and intestinal epithelium and is expressed in normal adult human gastrointestinal tract, reproductive system, skin, nervous system, urinary tract, and endocrine system. HER-3 is overexpressed in a variety of tumors including breast, stomach, pancreas, and colon, and is a reliable marker for aiding in the diagnosis of various cancers by immunohistochemistry.

APPLICATION

To ensure optimal assay performance, AREX recommends conducting reagent titration tailored to each testing system for optimal detection results.

Application	IHC
Dilution Ratio	1:50-1:200

*Results are sample-specific. Please refer to your local assay conditions and test parameters for reference.

PRODUCT OVERVIEW

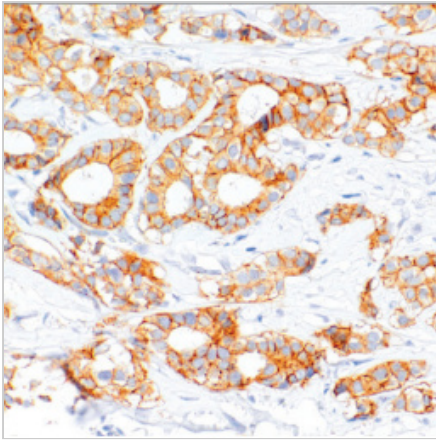
Antibody Type	Primary antibodies
Isotype	IgG2a
Positive Control	Breast Cancer
Localization	Secreted, Membranous
Form / Buffer	Tris Buffer, pH 7.3 - 7.7, with 1% BSA and <0.1% Sodium Azide
Purification	Purified
Conjugation	Unconjugated
Gene Symbol	ERBB3
Entrez Gene ID	2065
Uniprot	P21860
Alternative Names	ErbB3, Receptor tyrosine-protein kinase erbB-3

*AREX continuously optimizes our products. Webpage content may not reflect the latest updates. For inquiries, please contact info@arexbio.com or your local distributor.

*Clone Number, Reactivity, Source/Host and Clonality can be found in the product name and Key Features section above.

DATASHEET**Her3 Mouse Monoclonal Antibody (ARM623)****CAT. NO. ARM6914****| STORAGE**

Store at 4°C short term. For long term storage, store at -20°C, avoiding freeze/thaw cycles.

| DATA

Immunohistochemical staining of human breast tissue using Her3 Mouse Monoclonal Antibody (ARM623).

| RESEARCH USE ONLY

For Research Use Only. Not for diagnostic, therapeutics, prophylactic or in vivo use.

More information: [www.arexbio.com / her3-mouse-monoclonal-antibody-arm623-arm6914](http://www.arexbio.com/her3-mouse-monoclonal-antibody-arm623-arm6914)