

DATASHEET

IDO1 Rabbit Monoclonal Antibody (ARM625)

CAT. NO. ARM6916

KEY FEATURES

| | | | |
|---------------|------------|------------|------------|
| Target | IDO1 | Clone ID | ARM625 |
| Source / Host | Rabbit | Reactivity | Human |
| Applications | IHC | Dilution | 1:50-1:200 |
| Clonality | Monoclonal | Storage | -20°C |

BACKGROUND

Indoleamine 2,3-dioxygenase 1 (IDO1) is a cytoplasmic enzyme encoded by the INDO gene on human chromosome 8p22. IDO1 modulates levels of the amino acid tryptophan, which is vital for cell growth, but is also involved in immune evasion and tumor outgrowth. Blocking the IDO1 pathway may be a potential target for immuno and cancer therapy. IDO1 expressions have been found in endometrial, cervical carcinomas, renal cell carcinomas, non-small cell lung carcinomas, and colorectal carcinomas.

APPLICATION

To ensure optimal assay performance, AREX recommends conducting reagent titration tailored to each testing system for optimal detection results.

| | |
|----------------|------------|
| Application | IHC |
| Dilution Ratio | 1:50-1:200 |

*Results are sample-specific. Please refer to your local assay conditions and test parameters for reference.

PRODUCT OVERVIEW

| | |
|-------------------|--|
| Antibody Type | Primary antibodies |
| Isotype | IgG |
| Positive Control | Tonsil |
| Localization | Membranous, Cytoplasmic |
| Form / Buffer | Tris Buffer, pH 7.3 - 7.7, with 1% BSA and <0.1% Sodium Azide |
| Purification | Purified |
| Conjugation | Unconjugated |
| Gene Symbol | IDO1 |
| Entrez Gene ID | 3620 |
| Uniprot | P14902 |
| Alternative Names | IDO; INDO; Indoleamine 2,3-dioxygenase 1; IDO-1; Indoleamine-pyrrole 2,3-dioxygenase |

*AREX continuously optimizes our products. Webpage content may not reflect the latest updates. For inquiries, please contact info@arexbio.com or your local distributor.

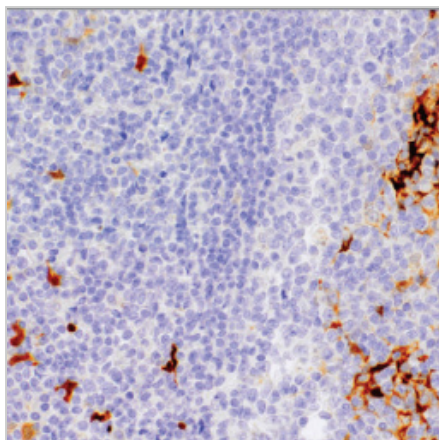
*Clone Number, Reactivity, Source/Host and Clonality can be found in the product name and Key Features section above.

DATASHEET**IDO1 Rabbit Monoclonal Antibody (ARM625)**

CAT. NO. ARM6916

STORAGE

Store at 4°C short term. For long term storage, store at -20°C, avoiding freeze/thaw cycles.

DATA

Immunohistochemical staining of human tonsil tissue using IDO1 Rabbit Monoclonal Antibody (ARM625).

RESEARCH USE ONLY

For Research Use Only. Not for diagnostic, therapeutics, prophylactic or in vivo use.

More information: [www.arexbio.com / id01-mouse-monoclonal-antibody-arm625-arm6916](http://www.arexbio.com/id01-mouse-monoclonal-antibody-arm625-arm6916)