

DATASHEET

IgG4 Mouse Monoclonal Antibody (ARM626)

CAT. NO. ARM6917

KEY FEATURES

Target	IgG4	Clone ID	ARM626
Source / Host	Mouse	Reactivity	Human
Applications	IHC	Dilution	1:50-1:200
Clonality	Monoclonal	Storage	-20°C

BACKGROUND

IgG4 is a subclass of immunoglobulin G antibody. IHC testing of IgG4 can aid to diagnose IgG4 related systemic disease (IgG4-RSD). IgG4 expression is elevated in inflammatory pseudotumor (IPT) and downregulated in inflammatory myofibroblastic tumor (IMT).

APPLICATION

To ensure optimal assay performance, AREX recommends conducting reagent titration tailored to each testing system for optimal detection results.

Application	IHC
Dilution Ratio	1:50-1:200

*Results are sample-specific. Please refer to your local assay conditions and test parameters for reference.

PRODUCT OVERVIEW

Antibody Type	Primary antibodies
Isotype	IgG1
Positive Control	Tonsil
Localization	Cytoplasmic
Form / Buffer	Tris Buffer, pH 7.3 - 7.7, with 1% BSA and <0.1% Sodium Azide
Purification	Purified
Conjugation	Unconjugated
Gene Symbol	IGHG4
Entrez Gene ID	3503
Uniprot	P01861
Alternative Names	Ig gamma-4 chain C region

*AREX continuously optimizes our products. Webpage content may not reflect the latest updates. For inquiries, please contact info@arexbio.com or your local distributor.

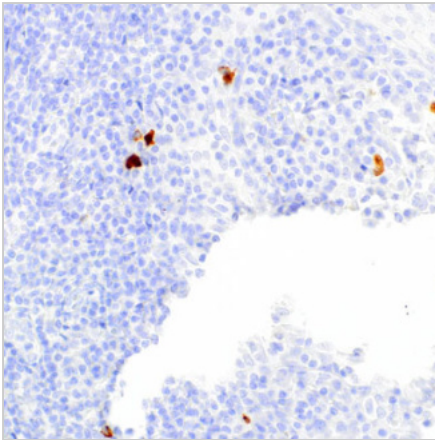
*Clone Number, Reactivity, Source/Host and Clonality can be found in the product name and Key Features section above.

DATASHEET**IgG4 Mouse Monoclonal Antibody (ARM626)**

CAT. NO. ARM6917

STORAGE

Store at 4°C short term. For long term storage, store at -20°C, avoiding freeze/thaw cycles.

DATA

Immunohistochemical staining of human tonsil tissue sections using IgG4 Mouse Monoclonal Antibody (ARM626).

RESEARCH USE ONLY

For Research Use Only. Not for diagnostic, therapeutics, prophylactic or in vivo use.

More information: www.arexbio.com/igg4-mouse-monoclonal-antibody-arm626-arm6917