

DATASHEET

Lambda Mouse Monoclonal Antibody (ARM628)

CAT. NO. ARM6919

KEY FEATURES

Target	Lambda	Clone ID	ARM628
Source / Host	Mouse	Reactivity	Human
Applications	IHC	Dilution	1:50-1:200
Clonality	Monoclonal	Storage	-20°C

BACKGROUND

Immunoglobulin classes share the same basic four polypeptide chain structure of two heavy chains (five types) and two light chains - kappa and lambda. The determination of light chain ratio is critical in evaluating B-cell neoplasms, as the majority of B-cell lymphomas express either kappa or lambda light chains, while a mixture of kappa and lambda is characteristic of reactive proliferations. Antibodies against lambda light chain is reportedly useful in the identification of leukemias, plasmacytomas, and certain non-Hodgkin's lymphomas.

APPLICATION

To ensure optimal assay performance, AREX recommends conducting reagent titration tailored to each testing system for optimal detection results.

Application	IHC
Dilution Ratio	1:50-1:200

*Results are sample-specific. Please refer to your local assay conditions and test parameters for reference.

PRODUCT OVERVIEW

Antibody Type	Primary antibodies
Isotype	IgG1
Positive Control	Tonsil
Localization	Cytoplasmic
Form / Buffer	Tris Buffer, pH 7.3 - 7.7, with 1% BSA and <0.1% Sodium Azide
Purification	Purified
Conjugation	Unconjugated
Gene Symbol	IGLC1 / IGLC2
Entrez Gene ID	3537
Uniprot	P0DOY2
Alternative Names	Ig lambda chain C region

*AREX continuously optimizes our products. Webpage content may not reflect the latest updates. For inquiries, please contact info@arexbio.com or your local distributor.

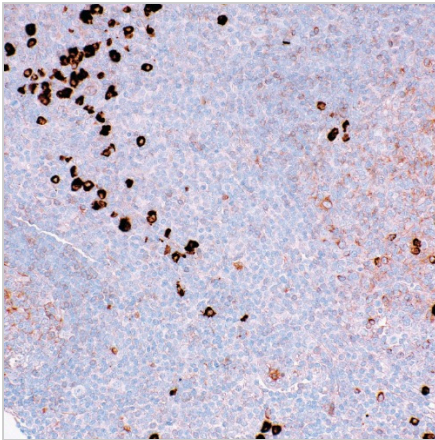
*Clone Number, Reactivity, Source/Host and Clonality can be found in the product name and Key Features section above.

DATASHEET**Lambda Mouse Monoclonal Antibody (ARM628)**

CAT. NO. ARM6919

STORAGE

Store at 4°C short term. For long term storage, store at -20°C, avoiding freeze/thaw cycles.

DATA

Immunohistochemical staining of human tonsil tissue using Lambda Mouse Monoclonal Antibody (ARM628).

RESEARCH USE ONLY

For Research Use Only. Not for diagnostic, therapeutics, prophylactic or in vivo use.

More information: [www.arexbio.com / lambda-mouse-monoclonal-antibody-arm628-arm6919](http://www.arexbio.com/lambda-mouse-monoclonal-antibody-arm628-arm6919)