

DATASHEET

Lp-PLA2 Mouse Monoclonal Antibody (ARM630)

CAT. NO. ARM6921

KEY FEATURES

Target	Lp-PLA2	Clone ID	ARM630
Source / Host	Mouse	Reactivity	Human
Applications	IHC	Dilution	1:50-1:200
Clonality	Monoclonal	Storage	-20°C

BACKGROUND

Lp-PLA2, also known as Lipoprotein-associated Phospholipase A2 or platelet-activating factor acetylhydrolase (PAF-AH), is an enzyme produced by inflammatory cells that functions to inactivate and degrade platelet-activating factor, a potent pro-inflammatory phospholipid, while also being responsible for hydrolyzing oxidatively modified polyunsaturated fatty acids. The products of the enzymatic actions of Lp-PLA2 have been linked to the development of atherosclerosis, and are positively correlated with increased risk of coronary heart disease and stroke. This marker has recently been studied as a therapeutic target for cardiac diseases.

APPLICATION

To ensure optimal assay performance, AREX recommends conducting reagent titration tailored to each testing system for optimal detection results.

Application	IHC
Dilution Ratio	1:50-1:200

*Results are sample-specific. Please refer to your local assay conditions and test parameters for reference.

PRODUCT OVERVIEW

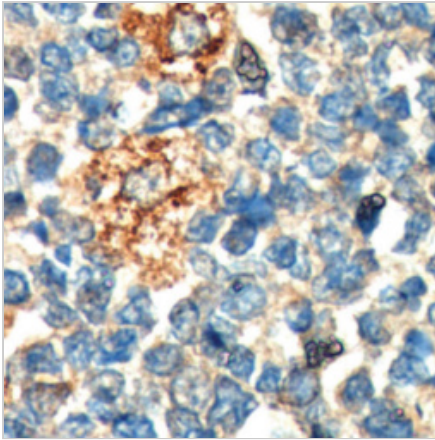
Antibody Type	Primary antibodies
Isotype	IgG1
Positive Control	Tonsil, Thymus, Placenta tissues
Localization	Cytoplasmic
Form / Buffer	Tris Buffer, pH 7.3 - 7.7, with 1% BSA and <0.1% Sodium Azide
Purification	Purified
Conjugation	Unconjugated
Gene Symbol	PLA2G7
Entrez Gene ID	7941
Uniprot	Q13093
Alternative Names	Platelet-activating factor acetylhydrolase (PAF-AH)

*AREX continuously optimizes our products. Webpage content may not reflect the latest updates. For inquiries, please contact info@arexbio.com or your local distributor.

*Clone Number, Reactivity, Source/Host and Clonality can be found in the product name and Key Features section above.

DATASHEET**Lp-PLA2 Mouse Monoclonal Antibody (ARM630)****CAT. NO. ARM6921****| STORAGE**

Store at 4°C short term. For long term storage, store at -20°C, avoiding freeze/thaw cycles.

| DATA

Immunohistochemical staining of human tonsil tissue using Lp-PLA2 Mouse Monoclonal Antibody (ARM630).

| RESEARCH USE ONLY

For Research Use Only. Not for diagnostic, therapeutics, prophylactic or in vivo use.

More information: [www.arexbio.com / lp-pla2-mouse-monoclonal-antibody-arm630-arm6921](http://www.arexbio.com/lp-pla2-mouse-monoclonal-antibody-arm630-arm6921)