

DATASHEET

NKX3.1 Rabbit Monoclonal Antibody (ARM637)

CAT. NO. ARM6928

KEY FEATURES

Target	NKX3.1	Clone ID	ARM637
Source / Host	Rabbit	Reactivity	Human
Applications	IHC	Dilution	1:50-1:200
Clonality	Monoclonal	Storage	-20°C

BACKGROUND

NKX3.1, also known as BAPX2 or NKX3A, is a homeobox protein located mainly in the prostate epithelium, and is also present in testis, ureter, and pulmonary bronchial mucous glands. The protein functions as a negative regulator of epithelial cell growth in prostate tissue, and as an androgen-regulated, prostatic tumour suppressor. NKX3.1 is clinically indicated in the majority of primary prostatic adenocarcinomas, as well as invasive ductal carcinomas and invasive lobular carcinomas of the breast. Underexpression of NKX3.1 is typical of human prostate carcinomas and prostatic intraepithelial neoplasia, and negative staining with Anti-NKX3.1 is common in urothelial carcinoma. Anti-NKX3.1 can be useful as an aid to distinguish between high grade prostate adenocarcinoma and high grade infiltrating urothelial carcinoma. It is also useful for identifying metastatic tumours and, when used in combination with Anti-ERG, this antibody may be a superior aid for identifying tumours of prostatic origin.

APPLICATION

To ensure optimal assay performance, AREX recommends conducting reagent titration tailored to each testing system for optimal detection results.

Application	IHC
Dilution Ratio	1:50-1:200

*Results are sample-specific. Please refer to your local assay conditions and test parameters for reference.

PRODUCT OVERVIEW

Antibody Type	Primary antibodies
Isotype	IgG
Positive Control	Prostate, Prostate Adenocarcinoma
Localization	Nuclear
Form / Buffer	Tris Buffer, pH 7.3 - 7.7, with 1% BSA and <0.1% Sodium Azide
Purification	Purified
Conjugation	Unconjugated
Gene Symbol	NKX3-1
Entrez Gene ID	4824
Uniprot	Q99801
Alternative Names	NK3 homeobox 1, NKX3A

*AREX continuously optimizes our products. Webpage content may not reflect the latest updates. For inquiries, please contact info@arexbio.com or your local distributor.

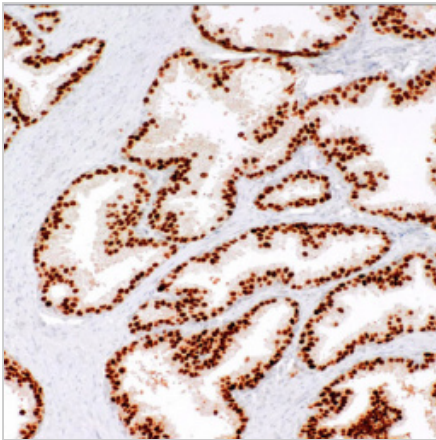
*Clone Number, Reactivity, Source/Host and Clonality can be found in the product name and Key Features section above.

DATASHEET**NKX3.1 Rabbit Monoclonal Antibody (ARM637)**

CAT. NO. ARM6928

STORAGE

Store at 4°C short term. For long term storage, store at -20°C, avoiding freeze/thaw cycles.

DATA

Immunohistochemical staining of human prostate cancer tissue using NKX3.1 Rabbit Monoclonal Antibody (ARM637).

RESEARCH USE ONLY

For Research Use Only. Not for diagnostic, therapeutics, prophylactic or in vivo use.

More information: [www.arexbio.com / nkx3.1-mouse-monoclonal-antibody-arm637-arm6928](http://www.arexbio.com/nkx3.1-mouse-monoclonal-antibody-arm637-arm6928)