

**DATASHEET**

**Prostate Specific Membrane Antigen Rabbit Monoclonal Antibody (ARM640)**

CAT. NO. ARM6931

**KEY FEATURES**

Target	Prostate Specific Membrane Antigen	Clone ID	ARM640
Source / Host	Rabbit	Reactivity	Human
Applications	IHC	Dilution	1:50-1:200
Clonality	Monoclonal	Storage	-20°C

**BACKGROUND**

Prostate-specific membrane antigen (PSMA), a type II transmembrane glycoprotein, is expressed in both normal prostate epithelial cells and prostate neoplastic cells. PSMA expression is elevated in prostate cancer and is proportional to cancer progression.

**APPLICATION**

To ensure optimal assay performance, AREX recommends conducting reagent titration tailored to each testing system for optimal detection results.

Application	IHC
Dilution Ratio	1:50-1:200

\*Results are sample-specific. Please refer to your local assay conditions and test parameters for reference.

**PRODUCT OVERVIEW**

Antibody Type	Primary antibodies
Isotype	
Positive Control	Prostate
Localization	Cytoplasmic, Membranous
Form / Buffer	Tris Buffer, pH 7.3 - 7.7, with 1% BSA and <0.1% Sodium Azide
Purification	Purified
Conjugation	Unconjugated
Gene Symbol	FOLH1
Entrez Gene ID	2346
Uniprot	Q04609
Alternative Names	Prostate-specific membrane antigen, FOLH1

\*AREX continuously optimizes our products. Webpage content may not reflect the latest updates. For inquiries, please contact [info@arexbio.com](mailto:info@arexbio.com) or your local distributor.

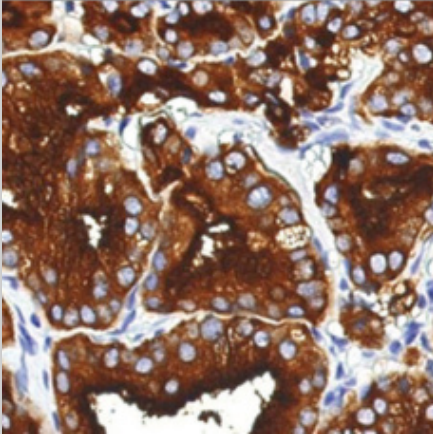
\*Clone Number, Reactivity, Source/Host and Clonality can be found in the product name and Key Features section above.

**DATASHEET****Prostate Specific Membrane Antigen Rabbit Monoclonal Antibody (ARM640)**

CAT. NO. ARM6931

**STORAGE**

Store at 4°C short term. For long term storage, store at -20°C, avoiding freeze/thaw cycles.

**DATA**

Immunohistochemical staining of human prostate adenocarcinoma tissue using Prostate Specific Membrane Antigen Rabbit Monoclonal Antibody (ARM640).

**RESEARCH USE ONLY**

For Research Use Only. Not for diagnostic, therapeutics, prophylactic or in vivo use.

More information: [www.arexbio.com/prostate-specific-membrane-antigen-mouse-monoclonal-antibody-arm640-arm6931](http://www.arexbio.com/prostate-specific-membrane-antigen-mouse-monoclonal-antibody-arm640-arm6931)