

DATASHEET

SATB2 Rabbit Monoclonal Antibody (ARM643)

CAT. NO. ARM6934

KEY FEATURES

Target	SATB2	Clone ID	ARM643
Source / Host	Rabbit	Reactivity	Human
Applications	IHC	Dilution	1:50-1:200
Clonality	Monoclonal	Storage	-20°C

BACKGROUND

Special AT-Rich Sequence-Binding Protein 2 (SATB2), also known as DNA-binding protein SATB2, is a protein involved in transcriptional regulation and chromatin remodeling. It has been identified as a potentially useful marker for neuroendocrine neoplasms or carcinomas of the colon and rectum, as well as for detecting osteoblastic differentiation in benign and malignant mesenchymal tumours. When used in combination with Cytokeratin 20 and Cadherin-17, SATB2 is able to help identify the large majority of colorectal carcinomas. Anti-SATB2 is useful for identifying colorectal carcinomas when working on a tumour of unknown origin, since upper gastrointestinal carcinomas, pancreatic ductal carcinomas, ovarian carcinomas, lung adenocarcinomas, and adenocarcinomas from other origins are all typically negative for SATB2.

APPLICATION

To ensure optimal assay performance, AREX recommends conducting reagent titration tailored to each testing system for optimal detection results.

Application	IHC
Dilution Ratio	1:50-1:200

*Results are sample-specific. Please refer to your local assay conditions and test parameters for reference.

PRODUCT OVERVIEW

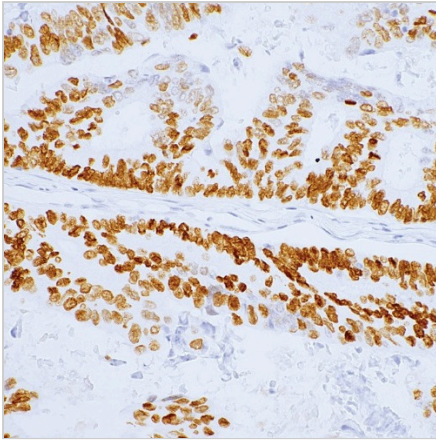
Antibody Type	Primary antibodies
Isotype	
Positive Control	
Localization	
Form / Buffer	Tris Buffer, pH 7.3 - 7.7, with 1% BSA and <0.1% Sodium Azide
Purification	Purified
Conjugation	Unconjugated
Gene Symbol	SATB2
Entrez Gene ID	23314
Uniprot	Q9UPW6
Alternative Names	Special AT-rich sequence-binding protein 2, DNA-binding protein SATB2

*AREX continuously optimizes our products. Webpage content may not reflect the latest updates. For inquiries, please contact info@arexbio.com or your local distributor.

*Clone Number, Reactivity, Source/Host and Clonality can be found in the product name and Key Features section above.

DATASHEET**SATB2 Rabbit Monoclonal Antibody (ARM643)****CAT. NO. ARM6934****| STORAGE**

Store at 4°C short term. For long term storage, store at -20°C, avoiding freeze/thaw cycles.

| DATA

Immunohistochemical staining of human colon adenocarcinoma tissue using SATB2 Rabbit Monoclonal Antibody (ARM643).

| RESEARCH USE ONLY

For Research Use Only. Not for diagnostic, therapeutics, prophylactic or in vivo use.

More information: [www.arexbio.com / satb2-mouse-monoclonal-antibody-arm643-arm6934](http://www.arexbio.com/satb2-mouse-monoclonal-antibody-arm643-arm6934)