

DATASHEET

Siglec-15 Mouse Monoclonal Antibody (ARM644)

CAT. NO. ARM6935

KEY FEATURES

Target	Siglec-15	Clone ID	ARM644
Source / Host	Mouse	Reactivity	Human
Applications	IHC	Dilution	1:50-1:200
Clonality	Monoclonal	Storage	-20°C

BACKGROUND

Siglec-15 (Sialic acid binding Ig-like lectin 15), is a member of the family of Siglecs cell surface proteins that bind sialic acid. Involved in cell adhesion and signalling, Siglec-15 expression in dendritic and macrophage cells interacts with DAP10 and DAP12 and binds to sialylated glycoproteins

APPLICATION

To ensure optimal assay performance, AREX recommends conducting reagent titration tailored to each testing system for optimal detection results.

Application	IHC
Dilution Ratio	1:50-1:200

*Results are sample-specific. Please refer to your local assay conditions and test parameters for reference.

PRODUCT OVERVIEW

Antibody Type	Primary antibodies
Isotype	
Positive Control	
Localization	
Form / Buffer	Tris Buffer, pH 7.3 - 7.7, with 1% BSA and <0.1% Sodium Azide
Purification	Purified
Conjugation	Unconjugated
Gene Symbol	SIGLEC15
Entrez Gene ID	284266
Uniprot	Q5DKG2
Alternative Names	Sialic acid-binding Ig-like lectin 15, CD333

*AREX continuously optimizes our products. Webpage content may not reflect the latest updates. For inquiries, please contact info@arexbio.com or your local distributor.

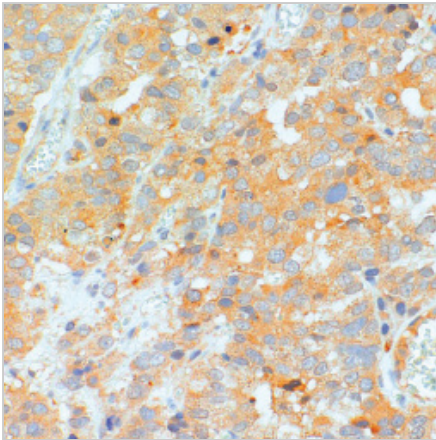
*Clone Number, Reactivity, Source/Host and Clonality can be found in the product name and Key Features section above.

DATASHEET**Siglec-15 Mouse Monoclonal Antibody (ARM644)**

CAT. NO. ARM6935

STORAGE

Store at 4°C short term. For long term storage, store at -20°C, avoiding freeze/thaw cycles.

DATA

Immunohistochemical staining of human prostate tissue using Siglec-15 Mouse Monoclonal Antibody (ARM644).

RESEARCH USE ONLY

For Research Use Only. Not for diagnostic, therapeutics, prophylactic or in vivo use.

More information: [www.arexbio.com / siglec-15-mouse-monoclonal-antibody-arm644-arm6935](http://www.arexbio.com/siglec-15-mouse-monoclonal-antibody-arm644-arm6935)