

## DATASHEET

# Sonic Hedgehog Rabbit Monoclonal Antibody (ARM645)

CAT. NO. ARM6936

### KEY FEATURES

Target	Sonic Hedgehog	Clone ID	ARM645
Source / Host	Rabbit	Reactivity	Human
Applications	IHC	Dilution	1:50-1:200
Clonality	Monoclonal	Storage	-20°C

### BACKGROUND

Sonic hedgehog (Shh) has been identified as a homologs of Drosophila hh, and functions as secreted proteins involved in the mediation of various cell-cell interactions.

### APPLICATION

To ensure optimal assay performance, AREX recommends conducting reagent titration tailored to each testing system for optimal detection results.

Application	IHC
Dilution Ratio	1:50-1:200

\*Results are sample-specific. Please refer to your local assay conditions and test parameters for reference.

### PRODUCT OVERVIEW

Antibody Type	Primary antibodies
Isotype	
Positive Control	
Localization	
Form / Buffer	Tris Buffer, pH 7.3 - 7.7, with 1% BSA and <0.1% Sodium Azide
Purification	Purified
Conjugation	Unconjugated
Gene Symbol	SHH
Entrez Gene ID	6469
Uniprot	Q15465
Alternative Names	SHH, HHG1, Sonic hedgehog protein

\*AREX continuously optimizes our products. Webpage content may not reflect the latest updates. For inquiries, please contact [info@arexbio.com](mailto:info@arexbio.com) or your local distributor.

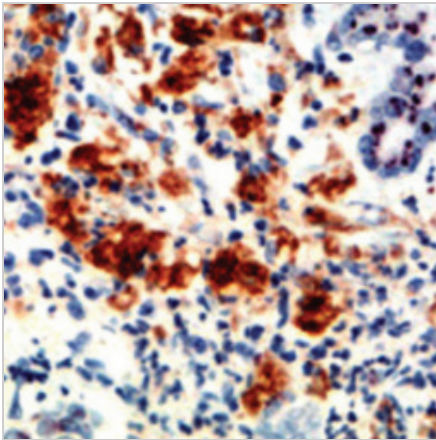
\*Clone Number, Reactivity, Source/Host and Clonality can be found in the product name and Key Features section above.

**DATASHEET****Sonic Hedgehog Rabbit Monoclonal Antibody (ARM645)**

CAT. NO. ARM6936

**STORAGE**

Store at 4°C short term. For long term storage, store at -20°C, avoiding freeze/thaw cycles.

**DATA**

Immunohistochemical staining of human liver tissue using Sonic Hedgehog Rabbit Monoclonal Antibody (ARM645).

**RESEARCH USE ONLY**

For Research Use Only. Not for diagnostic, therapeutics, prophylactic or in vivo use.

More information: [www.arexbio.com / sonic-hedgehog-mouse-monoclonal-antibody-arm645-arm6936](http://www.arexbio.com/sonic-hedgehog-mouse-monoclonal-antibody-arm645-arm6936)