

DATASHEET

SS18-SSX Rabbit Monoclonal Antibody (ARM647)

CAT. NO. ARM6938

KEY FEATURES

Target	SS18-SSX	Clone ID	ARM647
Source / Host	Rabbit	Reactivity	Human
Applications	IHC	Dilution	1:50-1:200
Clonality	Monoclonal	Storage	-20°C

BACKGROUND

The SS18-SSX is an oncoprotein that fuses the SS18 gene on chromosome 18 with X chromosome genes SSX1, SSX2, and SSX4. Expression of SS18-SSX is associated with Synovial Sarcoma (SS) which accounts for 8-10% of all soft tissue malignancies.

APPLICATION

To ensure optimal assay performance, AREX recommends conducting reagent titration tailored to each testing system for optimal detection results.

Application	IHC
Dilution Ratio	1:50-1:200

*Results are sample-specific. Please refer to your local assay conditions and test parameters for reference.

PRODUCT OVERVIEW

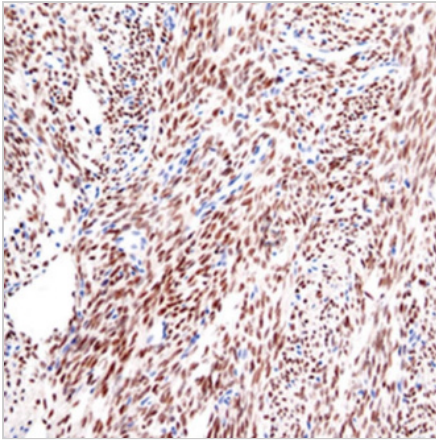
Antibody Type	Primary antibodies
Isotype	
Positive Control	
Localization	
Form / Buffer	Tris Buffer, pH 7.3 - 7.7, with 1% BSA and <0.1% Sodium Azide
Purification	Purified
Conjugation	Unconjugated
Gene Symbol	SS18
Entrez Gene ID	6760
Uniprot	Q15532
Alternative Names	Synovial sarcoma translocation, Chromosome 18

*AREX continuously optimizes our products. Webpage content may not reflect the latest updates. For inquiries, please contact info@arexbio.com or your local distributor.

*Clone Number, Reactivity, Source/Host and Clonality can be found in the product name and Key Features section above.

DATASHEET**SS18-SSX Rabbit Monoclonal Antibody (ARM647)****CAT. NO. ARM6938****| STORAGE**

Store at 4°C short term. For long term storage, store at -20°C, avoiding freeze/thaw cycles.

| DATA

Immunohistochemical staining of human synovial sarcoma tissue sections using SS18-SSX Rabbit Monoclonal Antibody (ARM647).

| RESEARCH USE ONLY

For Research Use Only. Not for diagnostic, therapeutics, prophylactic or in vivo use.

More information: [www.arexbio.com / ss18-ssx-mouse-monoclonal-antibody-arm647-arm6938](http://www.arexbio.com/ss18-ssx-mouse-monoclonal-antibody-arm647-arm6938)