

DATASHEET

Tartrate-Resistant Acid Phosphatase (TRAP) Rabbit Monoclonal Antibody (ARM648)

CAT. NO. ARM6939

KEY FEATURES

| | | | |
|---------------|--|------------|------------|
| Target | Tartrate-Resistant Acid Phosphatase (TRAP) | Clone ID | ARM648 |
| Source / Host | Rabbit | Reactivity | Human |
| Applications | IHC | Dilution | 1:50-1:200 |
| Clonality | Monoclonal | Storage | -20°C |

BACKGROUND

Tartrate-resistant acid phosphatase (TRAP) is an isoenzyme expressed in human alveolar macrophages, osteoclasts, spleen and liver. Studies have shown expression of TRAP is increased in the spleen and monocytes of individuals with Gaucher's disease, Hodgkin's disease and the sera of individuals undergoing active bone turnover. Elevated levels are also reported to be associated with various B cell and T cell leukemias and lymphomas, decidual cells, syncytiotrophoblasts and some macrophages distributed throughout maternal and embryonic tissues.

APPLICATION

To ensure optimal assay performance, AREX recommends conducting reagent titration tailored to each testing system for optimal detection results.

| | |
|----------------|------------|
| Application | IHC |
| Dilution Ratio | 1:50-1:200 |

*Results are sample-specific. Please refer to your local assay conditions and test parameters for reference.

PRODUCT OVERVIEW

| | |
|-------------------|---|
| Antibody Type | Primary antibodies |
| Isotype | |
| Positive Control | |
| Localization | |
| Form / Buffer | Tris Buffer, pH 7.3 - 7.7, with 1% BSA and <0.1% Sodium Azide |
| Purification | Purified |
| Conjugation | Unconjugated |
| Gene Symbol | ACP5 |
| Entrez Gene ID | 54 |
| Uniprot | P13686 |
| Alternative Names | TRAP, Acid phosphatase 5 tartrate resistant, TrATPase |

*AREX continuously optimizes our products. Webpage content may not reflect the latest updates. For inquiries, please contact info@arexbio.com or your local distributor.

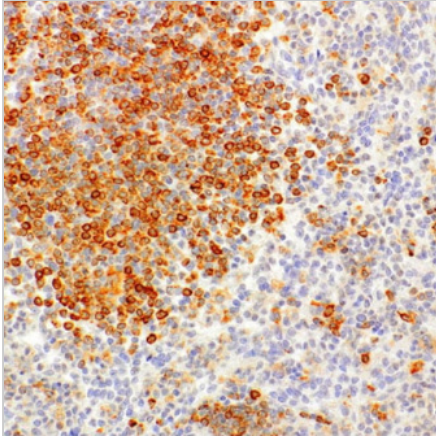
*Clone Number, Reactivity, Source/Host and Clonality can be found in the product name and Key Features section above.

DATASHEET**Tartrate-Resistant Acid Phosphatase (TRAP) Rabbit Monoclonal Antibody (ARM648)**

CAT. NO. ARM6939

STORAGE

Store at 4°C short term. For long term storage, store at -20°C, avoiding freeze/thaw cycles.

DATA

Immunohistochemical staining of human spleen tissue using Tartrate-Resistant Acid Phosphatase (TRAP) Rabbit Monoclonal Antibody (ARM648).

RESEARCH USE ONLY

For Research Use Only. Not for diagnostic, therapeutics, prophylactic or in vivo use.

More information: [www.arexbio.com / tartrate-resistant-acid-phosphatase-\(trap\)-mouse-monoclonal-antibody-arm648-arm6939](http://www.arexbio.com/tartrate-resistant-acid-phosphatase-(trap)-mouse-monoclonal-antibody-arm648-arm6939)