

DATASHEET

p16 Mouse Monoclonal Antibody (ARM877)

CAT. NO. ARM6945

KEY FEATURES

Target	p16	Clone ID	ARM877
Source / Host	Mouse	Reactivity	Human
Applications	IHC	Dilution	1:100-1:200
Clonality	Monoclonal	Storage	-20°C

BACKGROUND

The p16 (p16INK4A) protein is a cyclin-dependent kinase (CDK) inhibitor that plays an important regulatory role in the cell cycle. By controlling the transition between the G1 and S phases through regulation of retinoblastoma protein, p16 decelerates cellular differentiation and therefore acts as a tumor suppressor, making it the key marker in several human cancers including head and neck cancer, perianal lesions, melanomas, gliomas, lymphomas, and some types of leukemia. p16 is also clinically indicated in carcinomas of the esophagus, pancreas, lung, biliary tract, liver, colon, and urinary bladder.

APPLICATION

To ensure optimal assay performance, AREX recommends conducting reagent titration tailored to each testing system for optimal detection results.

Application	IHC
Dilution Ratio	1:100-1:200

*Results are sample-specific. Please refer to your local assay conditions and test parameters for reference.

PRODUCT OVERVIEW

Antibody Type	Primary antibodies
Isotype	IgG
Positive Control	Cervical Cancer, Tonsil, Colon Cancer
Localization	Cytoplasmic, Nuclear
Form / Buffer	Tris Buffer, pH 7.3 - 7.7, with 1% BSA and <0.1% Sodium Azide
Purification	Purified
Conjugation	Unconjugated
Gene Symbol	CDKN2A
Entrez Gene ID	1029
Uniprot	P42771
Alternative Names	p16 ^{INK4A} , CDKN2, INK4A, MTS1 (Multiple tumor suppressor 1), Cyclin-dependent kinase inhibitor 2A

*AREX continuously optimizes our products. Webpage content may not reflect the latest updates. For inquiries, please contact info@arexbio.com or your local distributor.

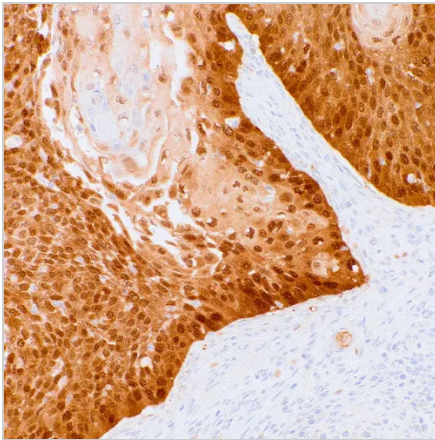
*Clone Number, Reactivity, Source/Host and Clonality can be found in the product name and Key Features section above.

DATASHEET**p16 Mouse Monoclonal Antibody (ARM877)**

CAT. NO. ARM6945

STORAGE

Store at 4°C short term. For long term storage, store at -20°C, avoiding freeze/thaw cycles.

DATA

Immunohistochemical staining of human Cervical Carcinoma tissue sections using p16 Mouse Monoclonal Antibody (ARM877).

RESEARCH USE ONLY

For Research Use Only. Not for diagnostic, therapeutics, prophylactic or in vivo use.

More information: [www.arexbio.com / p16-mouse-monoclonal-antibody-arm877-arm6945](http://www.arexbio.com/p16-mouse-monoclonal-antibody-arm877-arm6945)